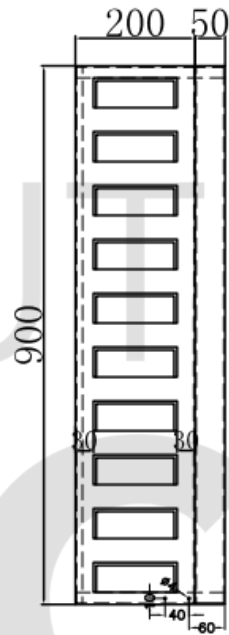
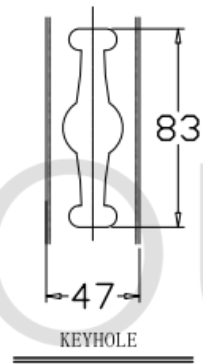
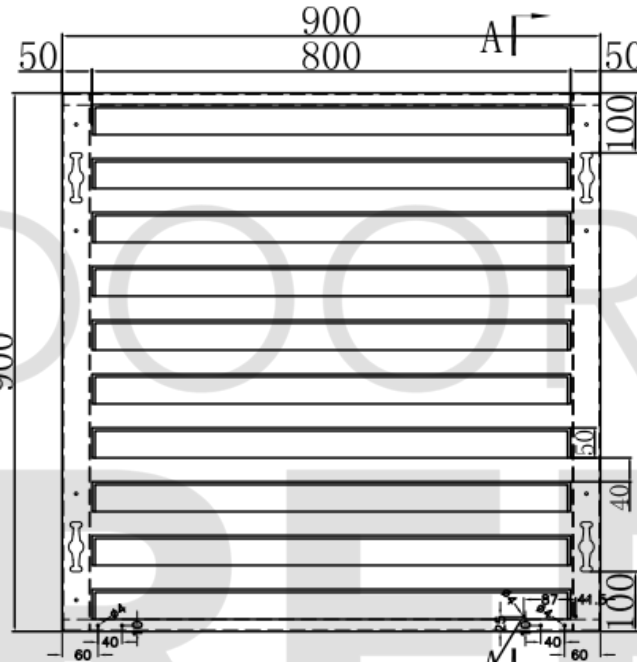


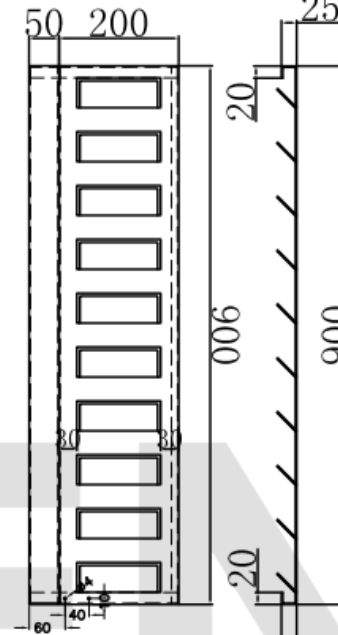
(The LOGO nameplate is fixed with  $\varnothing 4.2 \times 13$  stainless steel round head screws)



Left view

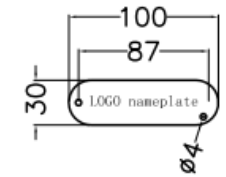


Bottom right corner riveted LOGO plate

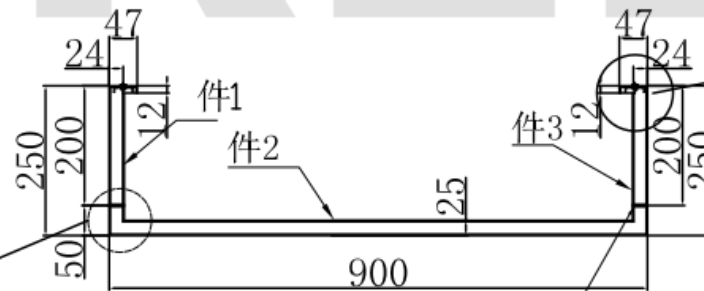
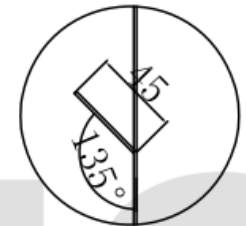


Right view

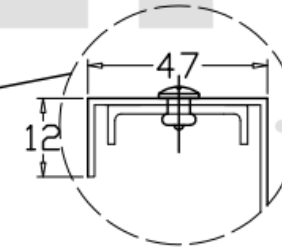
A-A



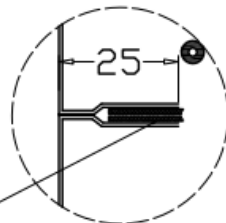
Install the sign after spraying



2 hinge connections



U-shaped stiffeners for connecting air-conditioning cover with drawing nails (5\*39\*5)



2 hinge connections

OUTDOOR  
**SCREENS**  
.com.au

1. The thickness of the aluminium plate is T=2.0mm, and the glue seam is 15mm
2. Colour: Powder RAL palette

Product: SOLARA  
Size: Large  
Edition No. 01  
Date: 10/8/2022

This drawing may not be reproduced, stored, or transmitted in any form by any means (electronic, mechanical, photocopying, recording or otherwise) without the prior written consent of Composite Furnishings Pty Ltd Trading as OUTDOOR SCREENS. This drawing is to be used only for the purposes specified by Composite Furnishings Pty Ltd Trading as OUTDOOR SCREENS and for no other purpose. We reserve all rights to change the product and product range without notice.